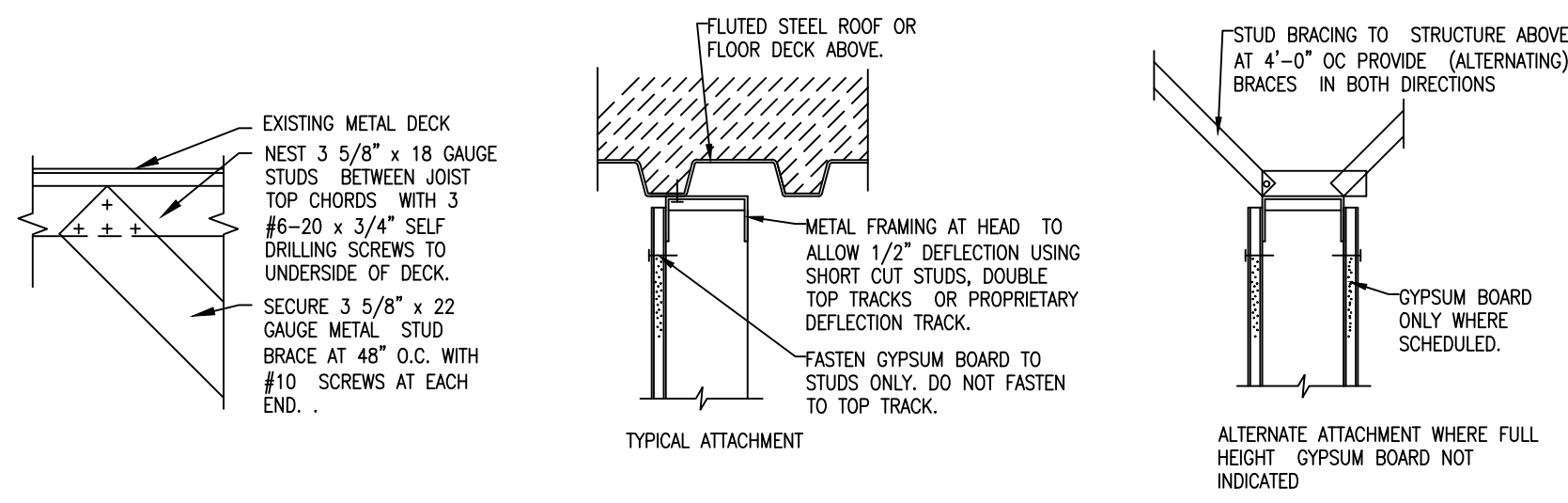


CONSTRUCTION NOTES:

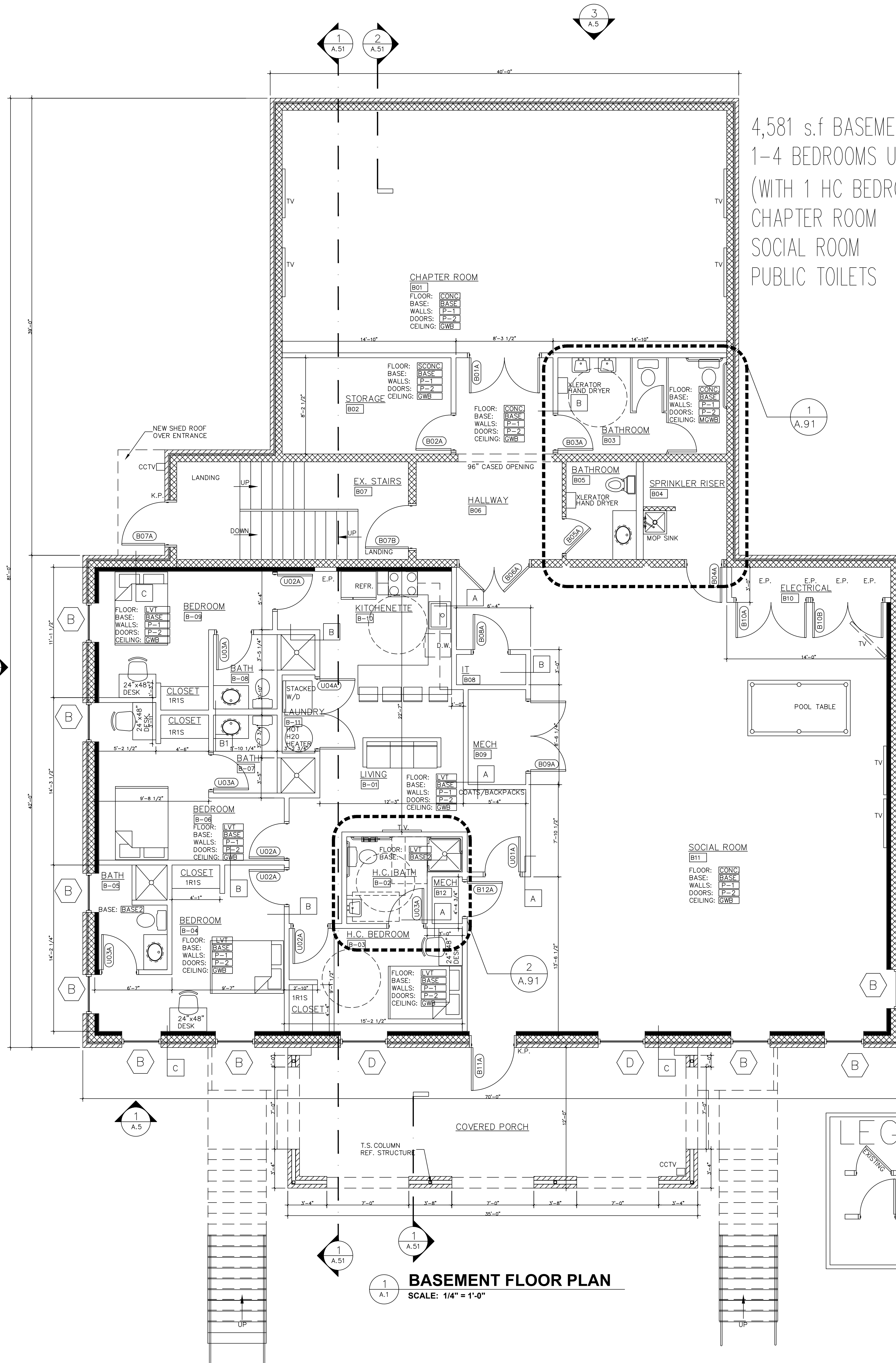
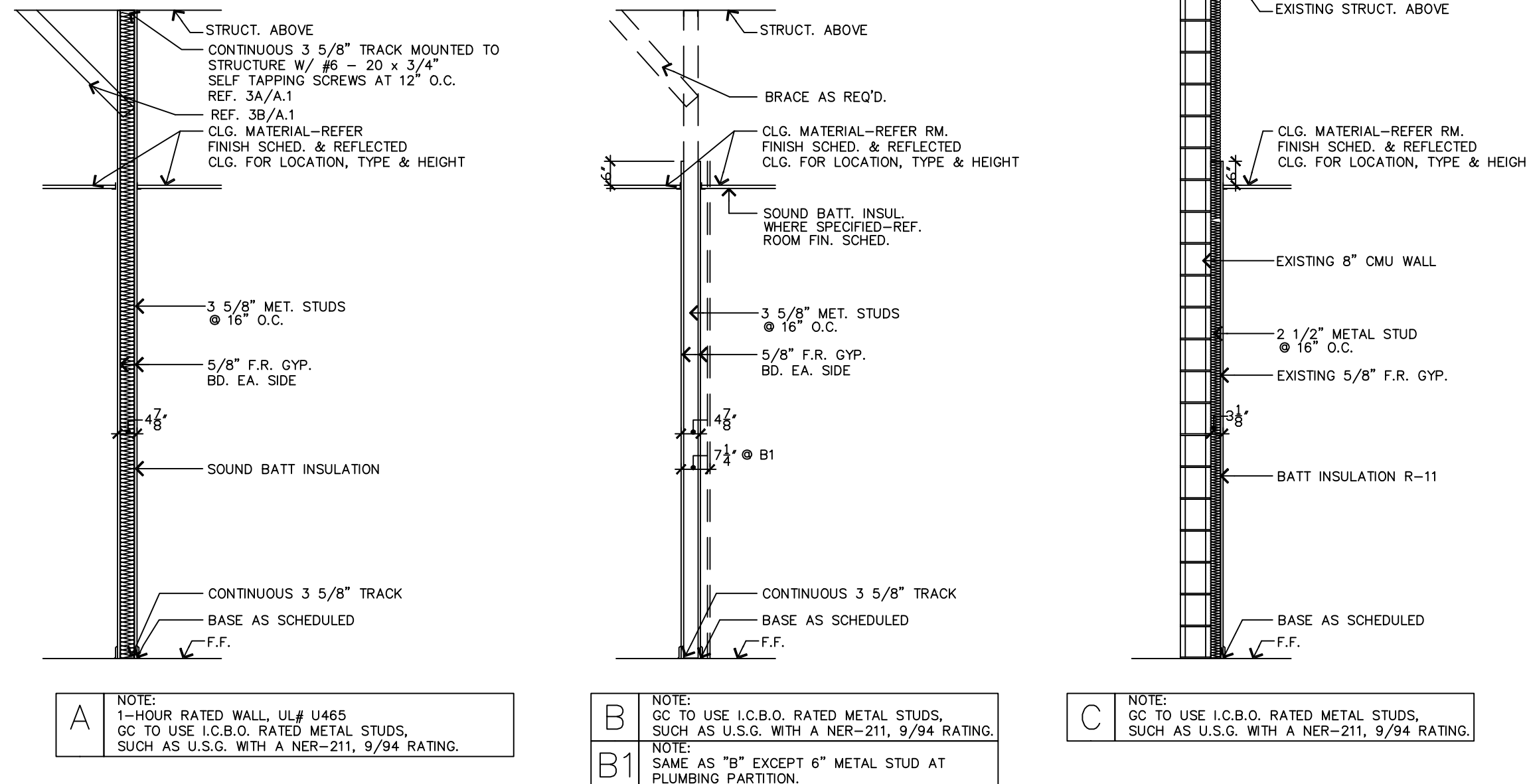
- FINISHES SHALL BE APPLIED TO EXTEND OVER, UNDER &/OR BEHIND ANY ITEM OF BUILT-IN MILLWORK, TRX, MIRRORS, ETC.
- THE INSTALLER SHALL REFER TO THE ELEVATION AND DETAIL SHEETS FOR SPECIFIC LOCATION OF FINISHES. SHOULD ANY DISCREPANCIES, OMISSIONS OR CONFLICTS FOUND, THE ARCHITECT IS TO BE NOTIFIED IMMEDIATELY.
- NO WORK IS TO PROCEED WITHOUT PROPER DIRECTION FROM THE OWNER'S REPRESENTATIVE/A.C.M.
- ALL COVER PLATES SHALL BE WHITE.
- TYPICAL WALLS TO BE PAINTED (P-1) EGGSHELL FINISH UNLESS OTHERWISE NOTED (U.O.N.)
- REFER TO FINISHES AND MILLWORK PLANS FOR ADDITIONAL SPECIFICATIONS.
- G.C. TO PREP FLOOR AND WALLS AS REQUIRED TO RECEIVE NEW FINISH.
- CHANGE HVAC UNIT FILTERS AT COMPLETION OF CONSTRUCTION.
- ALL MATERIALS TO BE INSTALLED PER MANUFACTURER'S SPECIFICATIONS.
- FINAL PROFESSIONAL CLEANUP BY G.C.
- ALL ANGLED WALLS ARE @ 45, 90 OR 135 DEGREES U.O.N.
- ALL PAINT ON A GYPSUM BOARD SURFACES SHALL BE 3 COATS (+/-) 1 PRIME & 2 FINISH, EXCEPT MECH. ONLY NEEDS 2.
- PROVIDE SOUND BATT INSULATION AT TOILETS AND SPIN ROOM PARTITIONS
- REFER TO MECHANICAL, ELECTRICAL & PLUMBING SHEETS FOR MEP DESIGN & SPECIFICATIONS.
- NO SEALERS OR FINISHES TO BE APPLIED UNTIL FLOORS ARE SWEEP AND MOPPED CLEAN.
- G.C. TO FIELD VERIFY & COORDINATE DIMENSIONS, NOTIFY ARCHITECT OF ANY DISCREPANCIES.
- PROVIDE OCCUPANCY SIGNS CONFORMING TO APPLICABLE BUILDING CODE REQUIREMENTS.
- REFER TO ELEVATIONS AND SECTIONS FOR ADDITIONAL INFORMATION AND REQUIREMENTS.
- MAX. 1/2" OFFSET AT ALL THRESHOLDS AND AT ANY CHANGE OF FLOORING MATERIAL. OFFSETS GREATER THAN 1/4" REQUIRE A MAX. OF 45° BEVEL.
- DIMENSIONS ARE TO THE FINISHED FACE, FACE OF MASONRY OR COLUMN LINE CENTER, U.O.N.
- TYPICAL DOOR JAMBES ARE LOCATED 2" OFF ADJACENT WALL U.O.N.
- G.C. TO FURNISH WALL-MOUNTED FIRE EXTINGUISHER (F.E.) (2A-10BC).
- ALL F.E. MUST HAVE CURRENT INSPECTION TAGS ATTACHED. 2 ARE EXISTING WITHIN SPACE.
- COVE BASE TO BE USED IN ALL AREAS, USE ROLL GOODS ONLY, NO SEAMS SHALL OCCUR WITHIN 6" OF OUTSIDE CORNER.
- BEFORE PROCEEDING WITH PROCUREMENT, THE RESPECTIVE INSTALLER SHALL FIELD VERIFY DIMENSIONS TO ASSURE THAT SUFFICIENT QUANTITIES OF MATERIAL ARE ORDERED TO COMPLETE THE WORK.
- INFORMATION CONTAINED IN THESE DOCUMENTS ARE BASED ON FIELD MEASUREMENTS AND MAY REQUIRE ADJUSTMENTS &/OR MODIFICATIONS TO CONFORM TO EXISTING CONDITIONS. THE OWNER SHALL APPROVE ADJUSTMENTS IN ACCORDANCE WITH DESIGN INTENT. IN NO CASE SHALL SAID ADJUSTMENTS REDUCE THE QUALITY OF CONSTRUCTIONS OR REDUCE THE PROJECTS CONFORMANCE TO STATE AND LOCAL CODES AND ORDINANCES.
- ALL TELEPHONE AND COMMUNICATIONS WIRING, WHETHER IN THIS CONTRACT OR UNDER SEPARATE CONTRACT, MUST BE AIR PLENUM APPROVED OR IN CONDUIT.
- DO NOT SCALE DRAWINGS. IF DRAWINGS ARE IN QUESTIONS, OBTAIN CLARIFICATION FROM TREY LUCAS AT (404)378-7431 PRIOR TO CONTINUING CONSTRUCTION.
- NO EXPOSED P.V.C. PIPING OR EXPOSED COPPER PIPING (NO EXCEPTIONS)
- MISCELLANEOUS HVAC AND PLUMBING WORK NOT SPECIFICALLY NOTED ON THE DRAWINGS SHALL COMPLY WITH THE APPLICABLE FEDERAL, STATE AND LOCAL CODES.
- ANY MATERIALS OR EQUIPMENT SUBSTITUTIONS WITHOUT PRIOR APPROVAL WILL RESULT IN REPLACEMENT WITH CORRECT MATERIALS OR EQUIPMENT AS SPECIFIED AT THE SOLE COST TO GENERAL CONTRACTOR.
- METAL STUD PARTITIONS SHALL HAVE REINFORCEMENT FOR ATTACHMENT OF WALL MOUNTED ITEMS AS REQUIRED & SHALL BE BRACED TO STRUCTURE ABOVE FOR HEAVY ITEMS AS REQUIRED FOR SUPPORT. IF WATER HEATER IS SCHEDULED TO BE INSTALLED OFF THE FLOOR, WALLS TO HAVE 16" STUD ON CENTER TO ACCOMMODATE THE WATER HEATER WALL MOUNTING KIT.
- PROVIDE 5/8" TYPE "X" GREEN BOARD AT WET LOCATIONS.
- DIMENSIONS MARKED "CLEAR" INDICATE A MINIMUM CLEARANCE THAT MUST BE MAINTAINED. ANY DISCREPANCIES MUST BE REPORTED TO TREY LUCAS ARCHITECTURE & CONSTRUCTION, LLC BEFORE CONSTRUCTION BEGINS.
- CONTRACTOR TO PROVIDE DOORS, FRAMES, STOPS, MUTES, AND BUTTS THROUGHOUT FOR A COMPLETE INSTALLATION.
- WORK SHALL COMPLY WITH THE A.D.A. REQUIREMENTS. CONSULT ARCHITECT IF MOUNTING HEIGHTS AND CLEARANCES ARE IN DOUBT.

GENERAL NOTES

- CONTRACTOR IS RESPONSIBLE FOR ALL FLOOR PREPARATION TO ASSURE THAT THE NEW FLOOR FINISHES ARE LEVEL AND ARE COMPLETED IN A PROFESSIONAL WORKMANSHIP MANNER. IF GREEN CONCRETE, CONFIRM WITH FLOORING MANUFACTURER ABOUT LAYING ON GREEN/WET CONCRETE.
- ANY MATERIALS OR EQUIPMENT SUBSTITUTIONS WITHOUT PRIOR APPROVAL BY PROJECT MANAGER WILL RESULT IN REPLACEMENT WITH CORRECT MATERIALS OR EQUIPMENT AS SPECIFIED AT THE SOLE COST TO GENERAL CONTRACTOR.
- ANY ADDITIONAL WORK AND/OR MATERIALS REQUIRED BY APPLICABLE BUILDING CODES AND REGULATIONS. THIS INCLUDES, BUT IS NOT LIMITED TO, FIRE PROTECTION AND LIFE SAFETY EQUIPMENT REQUIRED TO BE INSTALLED IN THE BUILDING AS A RESULT OF BUILDING CONSTRUCTION



PARTITION TYPES



4,581 s.f BASEMENT:
1-4 BEDROOMS UNIT
(WITH 1 HC BEDROOM)
CHAPTER ROOM
SOCIAL ROOM
PUBLIC TOILETS



William H. Lowndes P.E.
1395 Wilmington Way, Grayson, Georgia 30017
(770) 985-1281 Office (770) 985-1848 Fax
Consulting Structural Engineer

CONSTRUCTION MANAGER
Quality Structure, Inc
CONTACT: John Freudenthal
C: 704.756.3555
e: john.freudenthal@quality-structures.com

BUILDING DEPARTMENT
Building Inspections Division
Code Enforcement Dept.
First Floor, Right Door
389 Spruce Street
Morgantown, WV 26505
304-284-7401

Pi Kappa Alpha
West Virginia University
117 Belmar Avenue
Morgantown, WV 26505



SEALS 9.9.16

DATE _____ NO. _____

REVISIONS

NO.	DESCRIPTION

CONSTRUCTION DOCUMENTS RELEASED FOR CONSTRUCTION

Title: **BASEMENT**

Scale: 1/4" = 1'-0"

Drawing No. _____

Issue Date: **9.9.16**

A.1 of: _____