



TREY LUCAS ARCHITECTURE

Trey Lucas Architecture, LLC
 O: 404.378.7431
 324 Eastland Drive, Decatur, GA 30030
 www.treylucas.com

William H. Lowndes P.E.

1395 Wilmington Way, Grayson, Georgia 30017
 (770) 985-1281 Office (770) 985-1848 Fax
 Consulting Structural Engineer

CONSTRUCTION MANAGER

Quality Structure, Inc
 CONTACT: John Freudenthal
 C: 704.756.3555
 e: john.freudenthal@quality-structures.com

BUILDING DEPARTMENT

Building Inspections Division
 Code Enforcement Dept.
 First Floor, Right Door
 389 Spruce Street
 Morgantown, WV 26505
 304-284-7401

Pi Kappa Alpha
 West Virginia University
 117 Belmar Avenue
 Morgantown, WV 26505

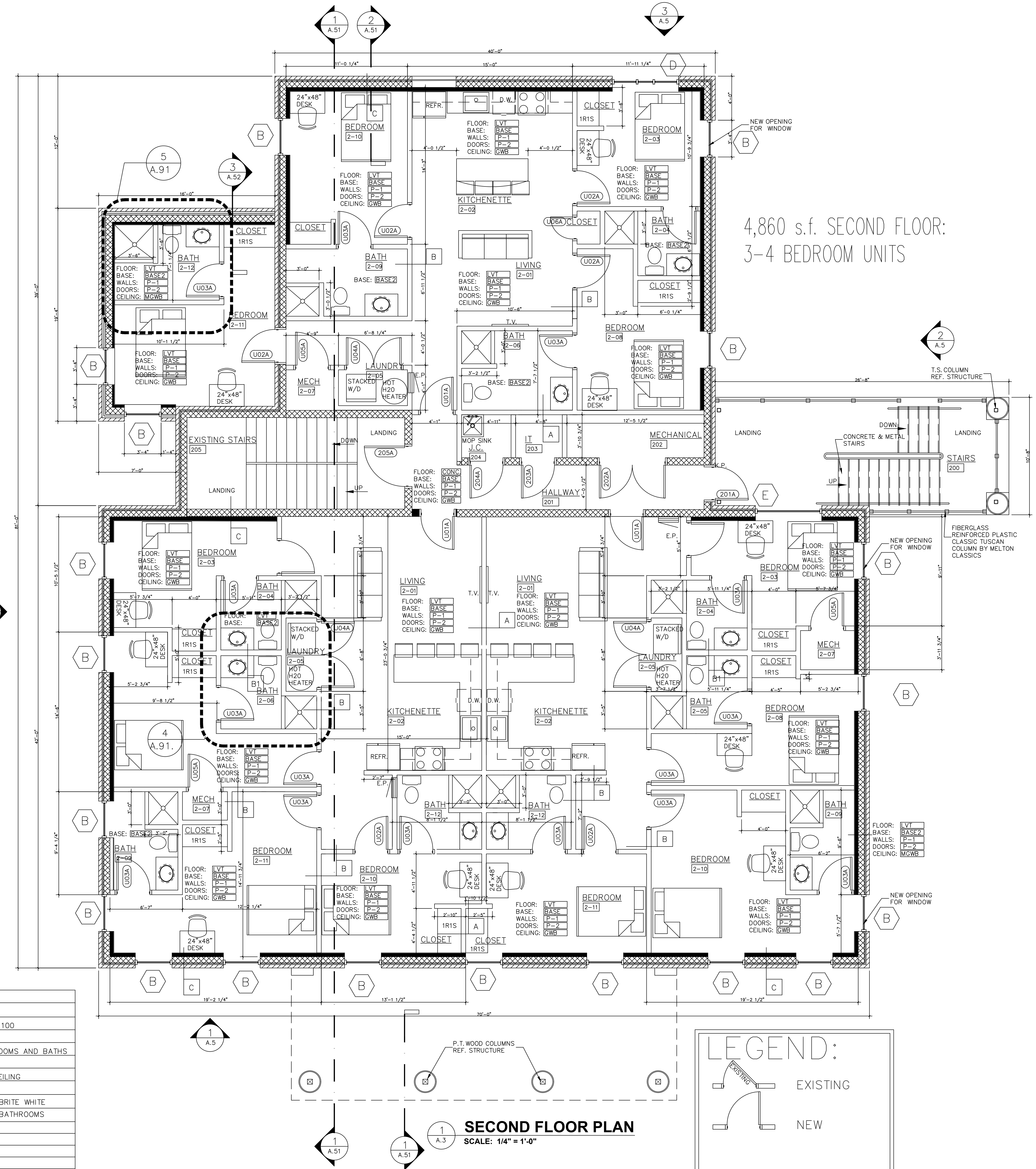


SEALS 9.9.16

DATE NO.

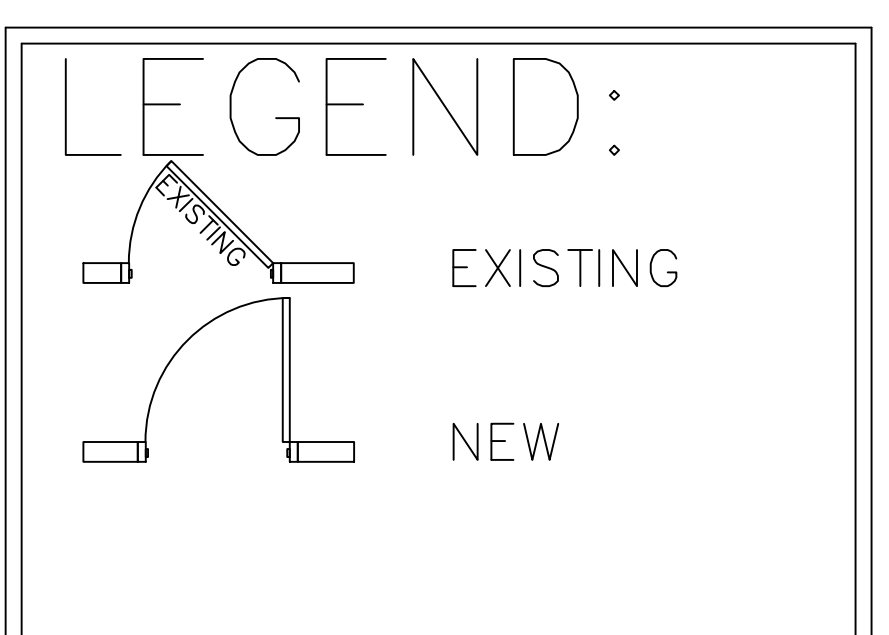
REVISIONS
CONSTRUCTION DOCUMENTS
RELEASED FOR CONSTRUCTION

Title:	SECOND FLOOR
Scale:	1/4" = 1'-0"
Drawing No.	A.3 of:
Issue Date	9.9.16



4,860 s.f. SECOND FLOOR:
 3-4 BEDROOM UNITS

SECOND FLOOR PLAN
 SCALE: 1/4" = 1'-0"



MATERIAL SCHEDULE FOR INTERIORS					
MARK	MATERIAL	COLOR	MANUFACTURER	PRODUCT NO.	REMARKS
CONC	CONCRETE	GRAY			Level 2 finish-honed finish-grit 100
SCONC	STAINED CONCRETE	tbd	KEMKO		
LVT	Prospect Plus LVT	Toasted Barnwood	MOHAWK	Prequel	THROUGHOUT UNITS LIVING, BEDROOMS AND BATHS
P-1	PAINT	Notable Hue	SHERWIN WILLIAMS	SW 6521	PAINT FOR WALLS
P-2	PAINT	PURE WHITE	SHERWIN WILLIAMS	SW 7005 GLOSS	PAINT FOR TRIM, HM DOORS & CEILING
BASE	4 1/4" WOOD BASE	BROWN	ROBERT BOWDEN INC.	WM620 - 9/16"x4 1/14"	SPECIES F
BASE2	CERAMIC TILE	MATTE BISCUIT	MODERN DIMENSIONS	4"x12"	COVED BASE 1/8" GROUT JOINT-BRITE WHITE
MGWB	M.R. GYPSUM BOARD				MOISTURE RESANT DRYWALL AT BATHROOMS
GWB	GYPSUM BOARD				CEILING MATERIAL-TYPE "C"
CAB-1	SHAKER CABINETS	CINNAMON	HOME DECORATORS COLLECTION		STAINED WOOD
CN-1	COUNTER TOP	WHITE DIAMOND	ECO BY CONSENTINO		
SPLASH	BACK SPLASH	WHITE DIAMOND	ECO BY CONSENTINO		4"